

TDH75/F30  
TDH75/F60  
TDH40/F30  
TDH40/F60

# thermo

fire doors



Thermo is a company dedicated to the production of sliding and personnel doors for internal and external applications requiring high standards of hygiene and temperature control.

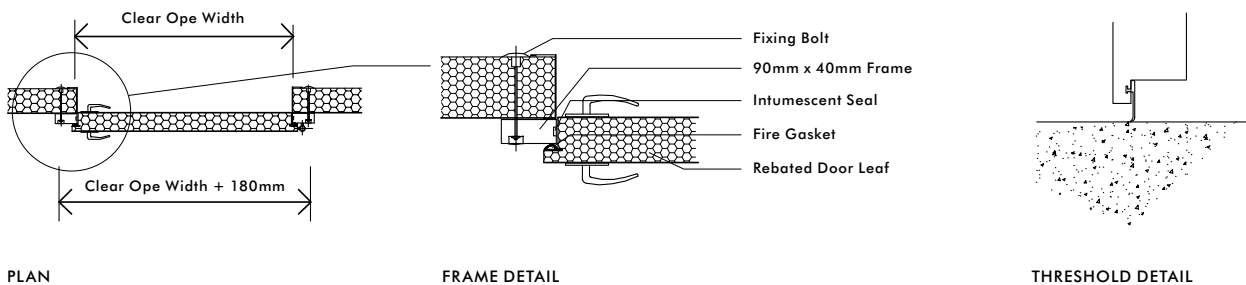
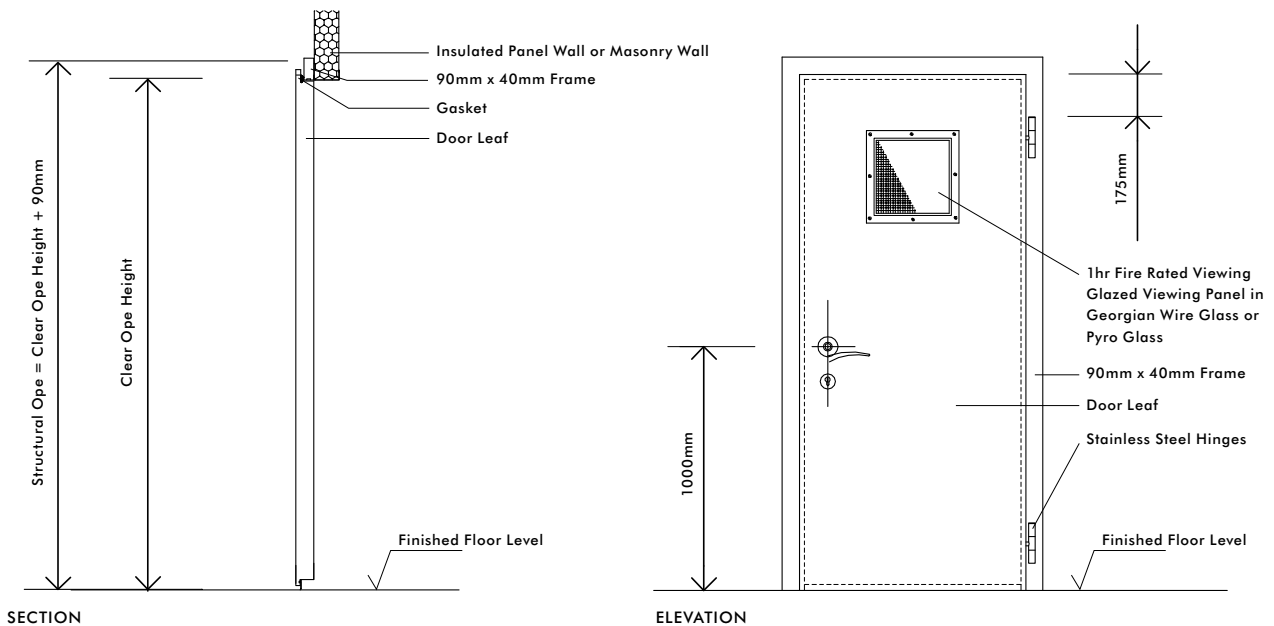
## REBATED & FLUSH HYGIENE FIRE DOORS

Fully tested in accordance with BS 476 Part 22, our fire doors are identical in options, looks and operation as our existing flush and rebated non-fire rated. All structural differences are internal within the frame and leaf.

Thus each door fits discreetly among other models within the same facility/build. With an identical clad finish to all other doors in our range both fire doors maintain the same high standard of hygiene and moisture resistance.

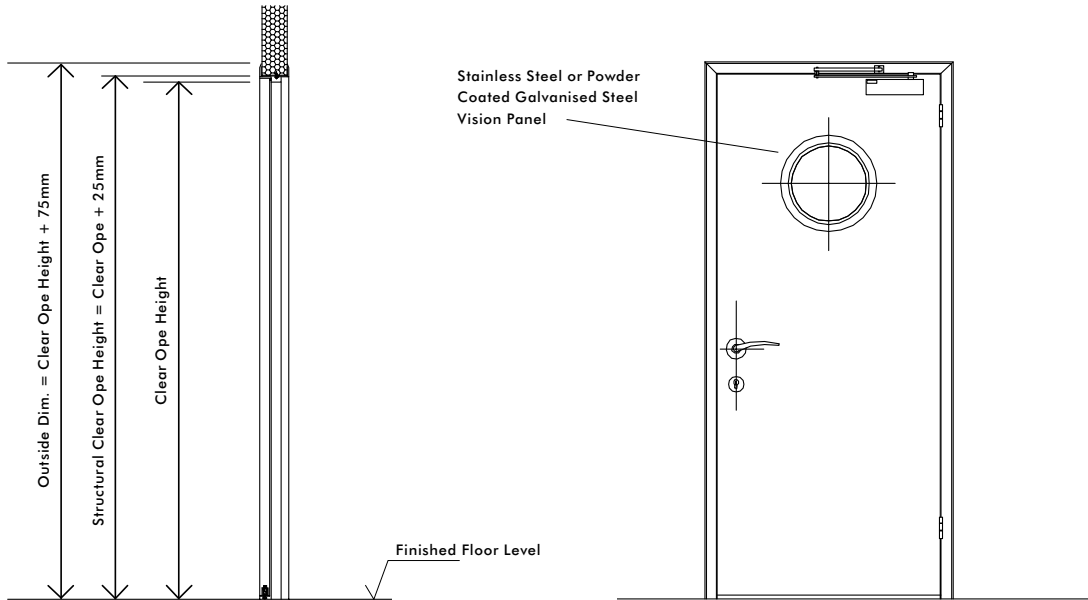
Similarly, installation follows the same easy procedure as the rest of our range. Both doors are available in 30 and 60 minute fire rating.

### TDH75/F30; TDH75/F60



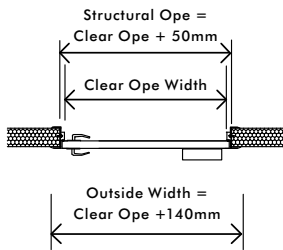
Threshold detail B where floor is level or sloped. This option can include a patent threshold plate if required.

TDH40/F30; TDH40/F60

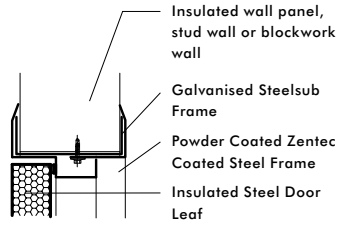


SECTION

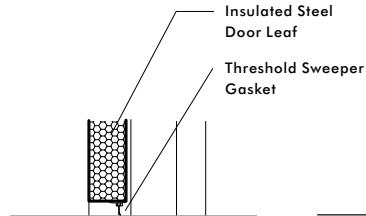
ELEVATION



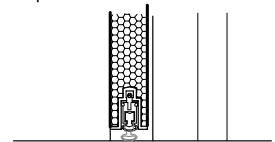
PLAN



HEAD DETAIL



THRESHOLD DETAIL WITH SWEEPER GASKET



THRESHOLD DETAIL WITH DROPDOWN GASKET



REBATED DOOR



FLUSH DOOR



FIRE TEST AFTER 60 MINUTES



## SPECIFICATIONS

### TDH40/F30; TDH40/F60

#### DOOR LEAF

- Flush leaf
- 43mm door leaf thickness
- Fire rated slab core
- Flush intumescent seal

#### FINISH

- Stainless steel with circular-polished finish, matt brush finish and weave-embossed
- Platisol HP200 or PVF2 in a variety of colours
- Food Safe laminated steel finish, 120my thickness

#### CLAMPING FRAME

- Stainless steel rebated two part frame with fire rated gasket seal
- Frame clamping over galvanised channel for panel installation
- Wall anchors provided for installation in masonry

#### FITTINGS

- The door is operated via stainless steel lever handle
- Locking by Euro profile cylinder as standard
- Stainless steel Hinges
- Door can be fitted with a pull handle, push plate and door closer
- Doors can also be fitted with panic bar with or without external access

#### OPTIONS

- Double leaf version with 'one active' or 'both active'
- A wide variety of frame designs to fit all possible situations
- Inward opening version
- Back Frame
- Kick Plates
- Vision Panel
- Variety of ironmongery
- Drop gasket

**(Technical data subject to change)**



## SPECIFICATIONS

### TDH75/F30; TDH75/F60

#### DOOR LEAF

- Rebated leaf
- 75mm door thickness
- Combination of mineral wool and composite material
- Slot in fire resistant gasket and thermal break

#### FINISH

- Stainless steel with circular-polished finish, matt brush finish and weave-embossed
- Plastisol HP200 or PVF2 in a variety of colours
- Food Safe laminated steel finish, 120my thickness

#### BUILT IN FRAME

- Frame clad in the same finish as door leaf
- Fire rated core
- Wall anchors provided for installation in masonry

#### FACE FIXED FRAME

- Frame clad in the same finish as the door leaf
- Fire rated core
- Stainless steel bolt through plates and nuts

#### FITTINGS

- The door is fitted with stainless steel lever handle
- Locking by Euro profile cylinder as standard
- Stuv or Fermod lock with internal release for chill grade
- Flush fitted or strap rising hinges made of stainless steel or enamel finished steels
- Door can be fitted with a pull handle, push plate and door closer
- Doors can also be fitted with panic bar with or without external access

#### OPTIONS

- Double leaf version with 'one active' or 'both active'
- A wide variety of frame designs to fit all possible situations
- Inward opening version
- Back Frame
- Kick Plates
- Vision Panel
- Variety of ironmongery

**(Technical data subject to change)**



thermo Ltd, Unit 7, Little Island Industrial Estate, Cork, Ireland  
T: +353 (0) 21 4354504 F: +353 (0) 21 4354316 [www.thermo.ie](http://www.thermo.ie) [info@thermo.ie](mailto:info@thermo.ie)